



Online Appendix

**This appendix was part of the submitted manuscript and has been peer reviewed.
It is posted as supplied by the authors.**

Appendix to: Park S, Kalfas S, Fazio TN, et al. Venous thromboembolism prophylaxis and related outcomes in patients with traumatic brain injury and prolonged intensive care unit stay. *Crit Care Resusc* 2021; doi: 10.51893/2021.4.OA1.

ESM (Electronic Supplemental Material)

eTable 1 - Processes of Care During ICU Stay

	Overall (n = 100)
Head CT scan	95 (95.0)
Number of head CT scans per patient	2.0 (1.0 – 4.0)
Time from hospital admission till the first head CT scan, days	0.5 (0.2 – 1.2)
Time from ICU admission till the first head CT scan, days	1.0 (0.0 – 1.0)
Head MRI	17 (17.0)
CT pulmonary angiogram	28 (28.0)
Number of CT pulmonary angiograms per patient	0.0 (0.0 – 1.0)
Time from hospital admission till the first CT pulmonary angiogram, days	9.7 (5.9 – 13.7)
Time from ICU admission till the first CT pulmonary angiogram, days	9.8 (6.0 – 14.2)
Lower limb venous ultrasound	15 (15.0)
Number of lower limb venous ultrasound per patient	0.0 (0.0 – 0.0)
Time from hospital admission till the first lower limb venous ultrasound, days	9.2 (6.4 – 13.7)
Time from ICU admission till the first lower limb venous ultrasound, days	9.5 (6.7 – 13.7)
Continuous renal replacement therapy (CRRT)	6 (6.0)
Duration of continuous renal replacement therapy, days	5.5 (3.5 – 7.5)
Anticoagulation for CRRT	
None	3 (50.0)
Citrate	2 (33.4)
Heparin	1 (16.7)
Inferior vena cava filter placement	5 (5.1)
Time from hospital admission till the inferior vena cava filter placement, days	6.3 (2.2 – 15.6)
Time from ICU admission till the inferior vena cava filter placement, days	6.0 (2.0 – 16.0)
Intracranial pressure monitoring or endo-ventricular drains	46 (46.0)
Time from hospital admission to removal, days	6.4 (4.7 - 9.6)
Time from ICU admission till the removal, days	6.9 (4.6 - 9.6)
Intracranial pressure monitoring device	43 (43.0)
Time from hospital admission to removal, days	5.7 (4.6 - 8.9)
Time from ICU admission to removal, days	5.8 (4.5 - 8.7)
External ventricular drainage (EVD) device	15 (15.0)
Time from hospital admission to removal, days	8.8 (6.4 - 12.6)
Time from ICU admission to removal, days	8.6 (6.4 - 12.5)

Data are median (quartile 25% - quartile 75%) or No (%). Percentages may not total 100 because of rounding.

CT: computed tomography; MRI: magnetic resonance imaging; ICU: intensive care unit

Table e 2 - Surgical Procedures According to the Development of VTE

	VTE (n = 12)	No VTE (n = 88)	p value
First three days			
Neurosurgical procedures	0 (0.0)	9 (10.2)	0.595
Number of procedures per patient	0.0 (0.0 - 0.0)	0.0 (0.0 - 0.0)	0.248
General surgery	1 (8.3)	14 (15.9)	0.687
Number of procedures per patient	0.0 (0.0 - 0.0)	0.0 (0.0 - 0.0)	0.483
Orthopedic procedures	3 (25.0)	22 (25.0)	0.999
Number of procedures per patient	0.0 (0.0 - 0.2)	0.0 (0.0 - 0.2)	0.983
First five days			
Neurosurgical procedures	0 (0.0)	10 (11.4)	0.604
Number of procedures per patient	0.0 (0.0 - 0.0)	0.0 (0.0 - 0.0)	0.221
General surgery	3 (25.0)	27 (30.7)	0.999
Number of procedures per patient	0.0 (0.0 - 0.2)	0.0 (0.0 - 1.0)	0.674
Orthopedic procedures	4 (33.3)	31 (35.2)	0.999
Number of procedures per patient	0.0 (0.0 - 1.0)	0.0 (0.0 - 1.0)	0.934
First seven days			
Neurosurgical procedures	0 (0.0)	12 (13.6)	0.351
Number of procedures per patient	0.0 (0.0 - 0.0)	0.0 (0.0 - 0.0)	0.175
General surgery	4 (33.3)	28 (31.8)	0.999
Number of procedures per patient	0.0 (0.0 - 1.0)	0.0 (0.0 - 1.0)	0.807
Orthopedic procedures	4 (33.3)	34 (38.6)	0.999
Number of procedures per patient	0.0 (0.0 - 1.0)	0.0 (0.0 - 1.0)	0.941
First 10 days			
Neurosurgical procedures	0 (0.0)	13 (14.8)	0.356
Number of procedures per patient	0.0 (0.0 - 0.0)	0.0 (0.0 - 0.0)	0.156
General surgery	4 (33.3)	35 (39.8)	0.761
Number of procedures per patient	0.0 (0.0 - 1.0)	0.0 (0.0 - 1.0)	0.780
Orthopedic procedures	4 (33.3)	35 (39.8)	0.761
Number of procedures per patient	0.0 (0.0 - 1.0)	0.0 (0.0 - 1.0)	0.883

Data are median (quartile 25% - quartile 75%) or No (%). Percentages may not total 100 because of rounding.

Figure e1 – Percentage of patients with Surgical Procedures on different days

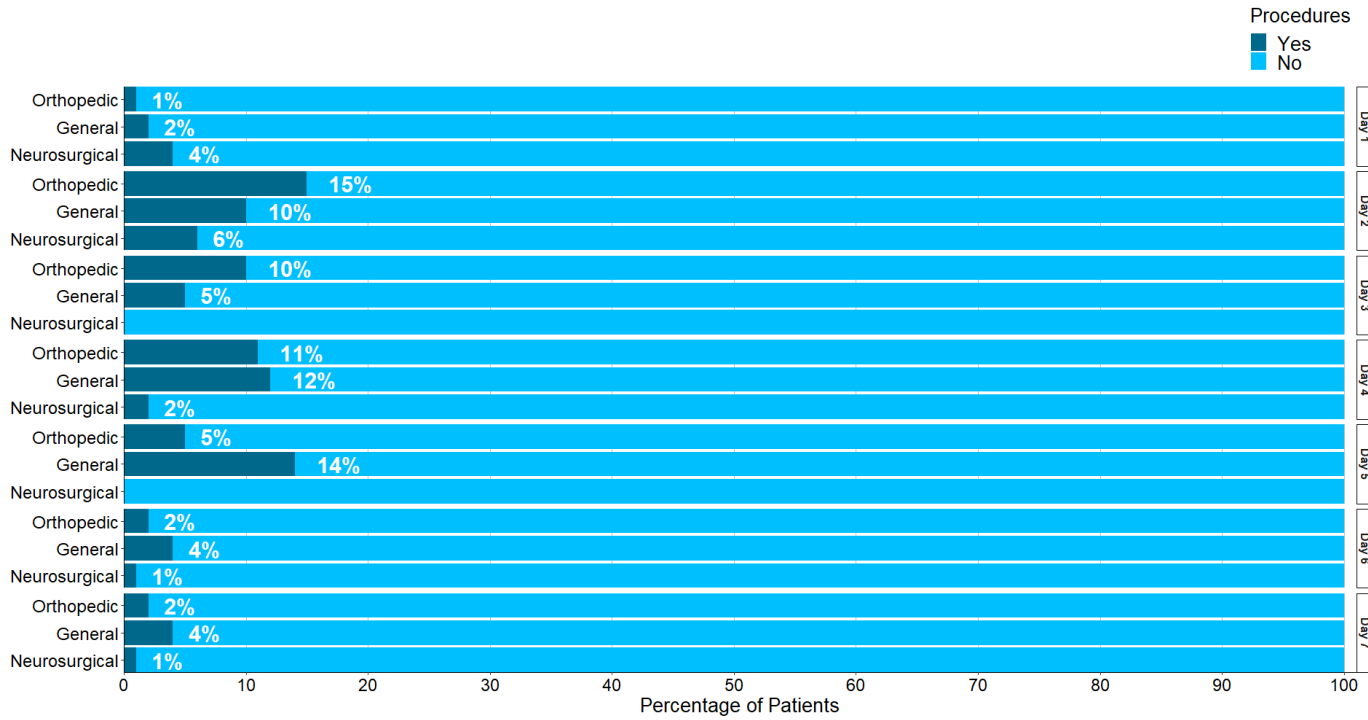


Figure e2- Percentage of patients receiving TED stockings or calf compression therapy according to APACHE III score and age above or below the median

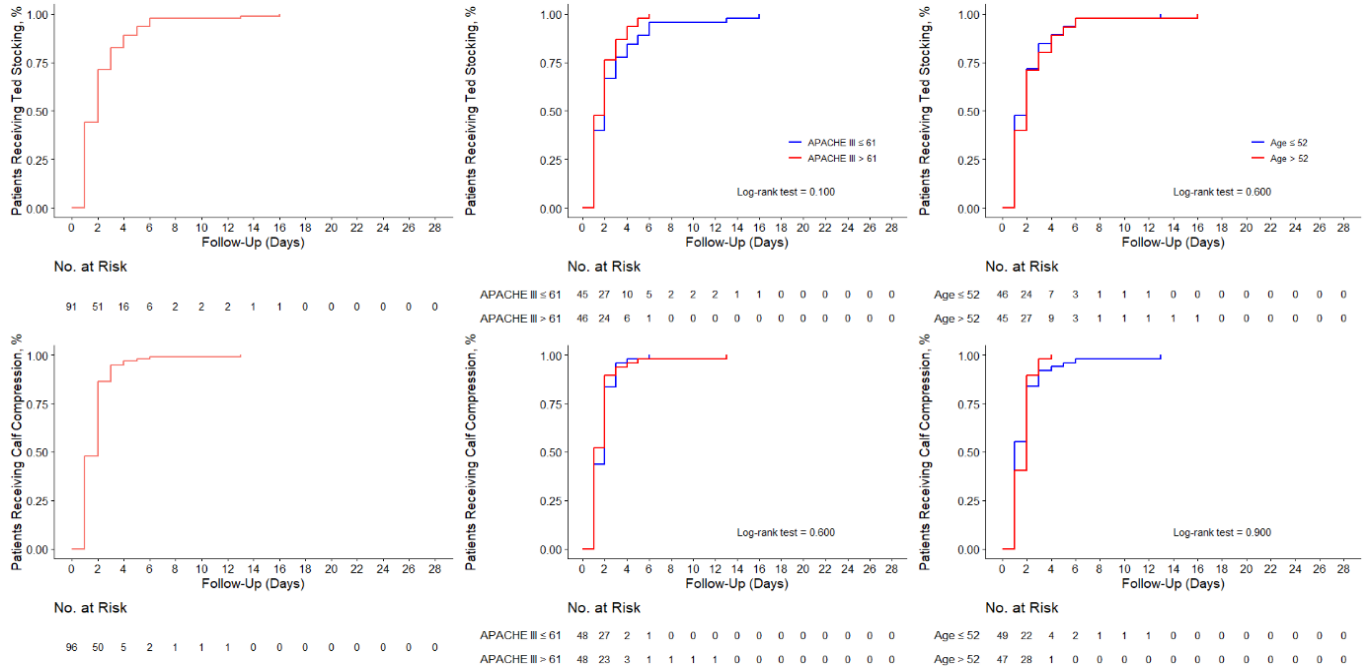


Figure e3 – Percentage of patients who received chemical prophylaxis according to APACHE III score and age above or below the median

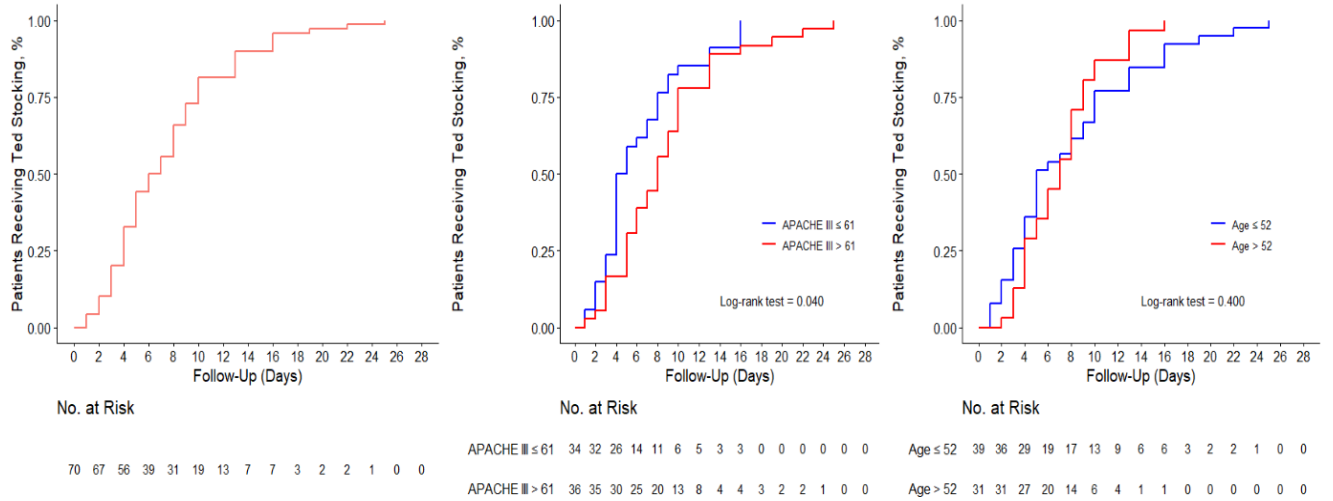


Figure e4

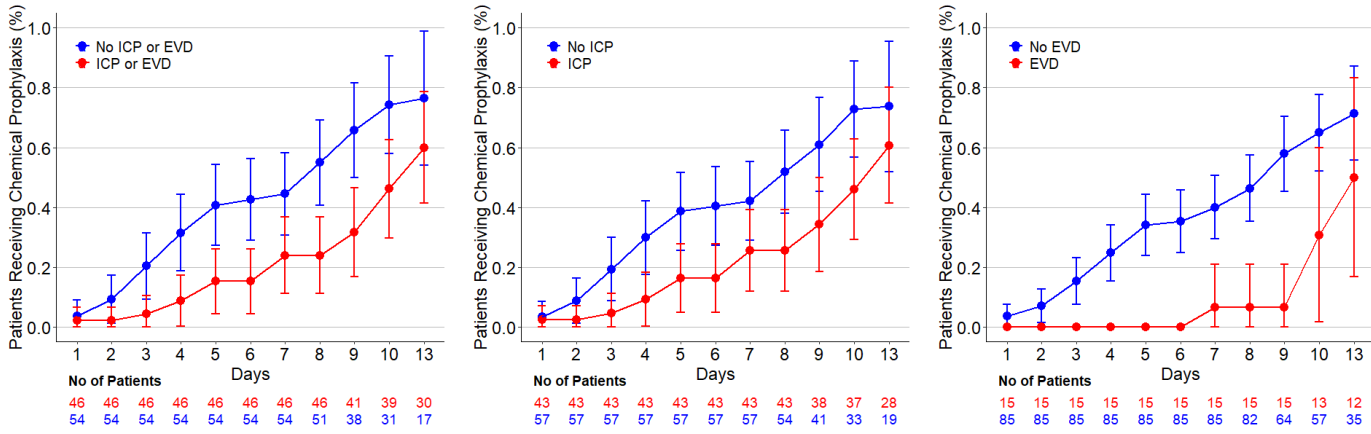
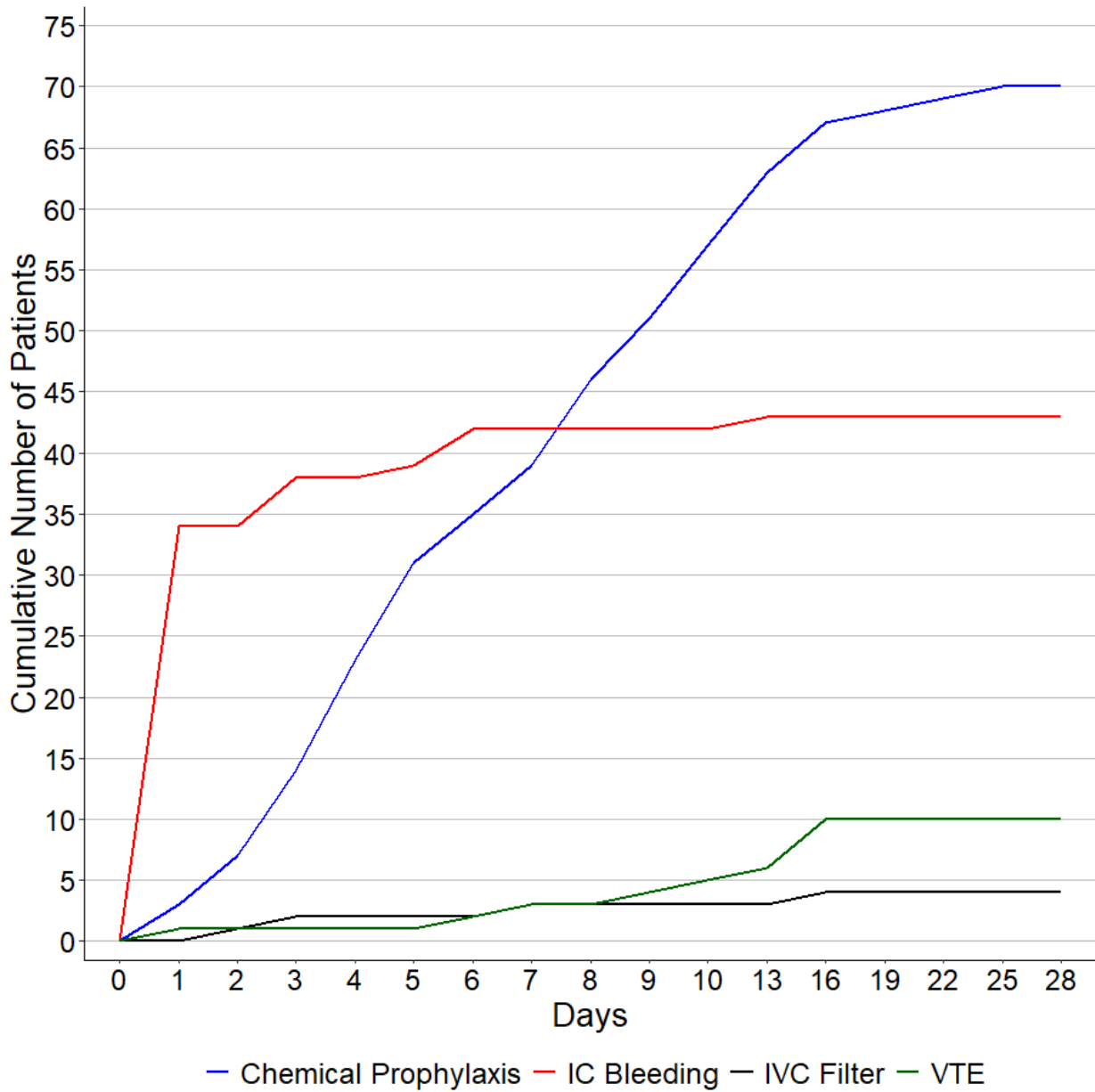


Figure e5: Cumulative number of interventions and VTE episodes during the first four weeks*



***NB: This figure only extends to day 28 and reports on 10 patients experiencing VTE. The remaining 2 patients who experienced VTE did so after day 28.**